

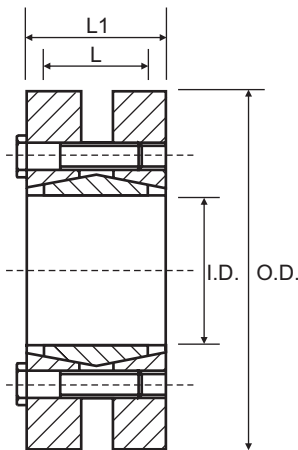


TLK603 (shrink disc)

Consists of one inside and two outside cone rings, which are joined by a set of screws. It is suitable for medium high torques. TLK603 locking bush is used for clamping a hollow shaft to a standard shaft. Available for hollow shaft diameters from 14 to 480 mm.

Characteristics

Medium-high torque
No shaft-hub axial movement
Quick installation
Quick dismantling



Torque = Maximum transmittable torque when axial force is zero.

Axial Force = Maximum axial force when transmittable torque is zero.

For TLK603 use the following tolerances

From 18 - 30 mm dw H6/j6

From 30 - 50 mm dw H6/h6

From 50 - 80 mm dw H6/g6

From 80 - 500 mm dw H7/g6

Part No.	I.D.	O.D.	S.D.*	L	L1	Torque Nm	Axial Force N
TLK603--14/38	14	38	12	7	11	50	9000
TLK603--16/41	16	41	14	11	15	90	13000
TLK603--18/43	18	43	15	11	15	90	13000
TLK603--24/50	24	50	21	14	19.5	250	29000
TLK603--30/60	30	60	26	16	21.5	380	33000
TLK603--36/72	36	72	31	18	23.5	630	58000
TLK603--44/80	44	80	36	20	25.5	860	77000
TLK603--50/90	50	90	42	22	27.5	1380	92000
TLK603--55/100	55	100	48	23	30.5	1880	97000
TLK603--62/110	62	110	52	23	30.5	2400	117000
TLK603--68/115	68	115	60	23	30.5	3150	120000
TLK603--75/138	75	138	65	25	32.5	3950	155000
TLK603--80/145	80	145	70	25	32.5	4600	158000
TLK603--85/155	85	155	75	30	39	7400	216000
TLK603--90/155	90	155	75	30	39	7250	210000
TLK603-100/170	100	170	80	34	44	9000	240000
TLK603-110/185	110	185	85	39	50	10800	262000
TLK603-115/188	115	188	90	39	50	11100	269000
TLK603-120/215	120	215	90	42	54	14500	340000
TLK603-125/215	125	215	95	42	54	15000	352000
TLK603-130/215	130	215	100	42	54	15400	362000
TLK603-140/230	140	230	105	46	60.5	20100	425000
TLK603-155/265	155	265	115	50	64.5	28000	509000
TLK603-160/265	160	265	120	50	64.5	28800	520000
TLK603-165/290	165	290	125	56	71	39000	655000
TLK603-170/290	170	290	130	56	71	40100	670000
TLK603-175/300	175	300	135	56	71	45000	675000
TLK603-180/300	180	300	140	56	71	46300	885000
TLK603-185/330	185	330	145	71	86	62000	861000
TLK603-190/330	190	330	150	71	86	63800	885000
TLK603-195/350	195	350	155	71	86	81500	1071000
TLK603-200/350	200	350	160	71	86	86000	1080000
TLK603-220/370	220	370	170	88	104	110000	1290000
TLK603-240-405	240	405	190	92	109	156000	1675000
TLK603-260/430	260	430	210	103	120	205000	2010000
TLK603-280/460	280	460	230	114	134	270000	2350000
TLK603-300/485	300	485	245	122	142	315000	2636000

All dimensions in mm unless otherwise stated

*S.D.: The maximum shaft diameter. Smaller shaft diameters can be used at reduced Torque and Axial Force.